

WE'RE FOR FARMERS.

FORAGE & CORN 2026



BEING A UFA MEMBER MEANS YOU COULD EARN PATRONAGE ON MANY PURCHASES YOU MAKE TO GROW HEALTHY CROPS.

THAT'S A PLUS.



Feed smarter. Grow stronger.

Corn and forage crops can be the workhorses of your feed program. Their versatility—from grazing to putting up hay to chopping for silage—speaks for itself. But consistent performance can be a challenge with Western Canada's short and unpredictable growing season... and that's without factoring in constant weed and pest pressure. Whether you want to extend the grazing season, improve feed quality or maximize tonnage, UFA has the seeds and expertise you need to optimize each acre. Success starts with matching your crop choices to your goals. Picking up this guide is your first step towards doing just that.



Scan the code to find out more about forage at UFA.com





PASTURE BLENDS



PROSTOCK DL Pasture Mix 5.5 kg/12 lbs per acre 1131886

- 40% Fleet Meadow Brome
- 25% SFT Tall Fescue
- 15% Kirk Crested WH
- 10% Sidewinder Alfalfa
- 10% Intermediate WH

- Blend designed for the drier regions of Western Canada
- Combined performance of Meadow Brome, Kirk Crested Wheat, Orchardgrass and Intermediate Wheat Grass for more season-long forage production
- 10% of a creeping rooting alfalfa added for nitrogen fixation and to enhance the palatability
- Well-suited to hay or pasture production
- Performs well in areas with less than 8" of precipitation a year

PROSTOCK HM Pasture Mix 7 kg/15 lbs per acre 1131885

- 40% Fleet Meadow Brome
- 20% SFT Tall Fescue
- 20% WH Orchardgrass
- 15% Cicer Milkvetch
- 5% Titan Timothy

- Bloat-free blend with 15% Cicer Milkvetch for the higher moisture areas of the prairies
- Combination of Meadow Brome and Orchardgrass combined with limited timothy for a high quality forage program
- Well suited to hay or pasture production
- Performs well in areas with more than 8" of precipitation a year



Stockmans 6.5 kg/14 lb per acre 482980

- 35% MBA Meadow Bromegrass
- 20% Haymate XL Orchardgrass
- 15% Cicer Milkvetch
- 15% Stargrazer Tall Fescue
- 10% Endo-Graze XL Perennial Ryegrass
- 5% Top Tim XL Timothy

- Widely adaptable.
- A well balanced mixture
- Non-bloating Cicer Milkvetch utilized to increase quality.

PasturePro 6 kg/13 lb per acre 531927

- 30% MBA Meadow Bromegrass
- 20% AC Grazeland Br Alfalfa
- 15% Haymate XL Orchardgrass
- 10% Stargazer XL Tall Fescue
- 10% Endo-Graze XL Perennial Ryegrass
- 10% Mahulena Festulolium
- 5% Top Tim XL Timothy

- Widely adaptable.
- Highest yielding pasture blend.
- Season long performance.
- Designed for maximum growth.

Cattlemans 6.5 kg/14 lb per acre 483024

- 40% MBA Meadow Bromegrass
- 15% Kirk Crested Wheatgrass
- 15% AC Grazeland Br Alfalfa
- 15% Stargrazer XL Tall Fescue
- 8% Dahurian Wildrye
- 7% Slender Wheatgrass

- Ideal grassland pasture
- Quick regrowth, good drought tolerance and season long growth.
- Built for beef!

RangePro 6.5 kg/14 lb per acre 855293

- 50% MBA Meadow Bromegrass
- 10% Fairway Crested Wheatgrass
- 10% Haymate XL Orchardgrass
- 10% Stargazer Tall Fescue
- 10% Mahulena Festulolium
- 5% Top Tim XL Timothy
- 5% Darhurian Wildrye

- Legume-free mix simplifies management
- Adapted to the drier areas of the prairies

Drylands 6.5 kg/14 lb per acre 482855

- 40% MBA Meadow Bromegrass
- 20% Kirk Crested Wheatgrass
- 20% Pubescent Wheatgrass
- 10% Dahurian Wild Ryegrass
- 10% CR XL Alfalfa

- Use for long term production
- Excellent persistence
- Season-long growth

HAY BLENDS



PROSTOCK DL Hay Blend 4.5 kg/10 lbs per acre 1131888

- 45% PROSTOCK Hay Choice Blend Alfalfa
- 20% Carlton Smooth Brome
- 20% SFT Tall Fescue
- 15% Kirk Crested WG

- Choice Alfalfa blended with grasses for maximum production under mid-to dry-moisture conditions
- Crested Wheat for early growth
- Smooth Brome and Orchardgrass for enhanced palatability
- Great winter feeding blend for range cows
- Performs well in areas with less than 8” of precipitation a year

PROSTOCK HM Hay Blend 6.5 kg/14 lbs per acre 1131887

- 70% Dakota Alfalfa
- 15% Carlton Smooth Brome
- 15% SFT Tall Fescue

- Blend of multifoliolate alfalfa and grasses, for a high-quality forage offering
- Excellent for a 2 or 3 cut system
- Quick regrowth of Dakota Alfalfa allows for grasses to be vegetative when harvested
- Performs well in areas with more than 8” of precipitation a year



HayPro Dry 7 kg/15 lb per acre 1126967

- 40% Big Ton XL Brome
- 30% Kirk Crested Wheatgrass
- 30% CR XL Alfalfa

- Well suited for dry sandy soils
- Great for single-cut hay systems that require fall grazing

HayPro T10 6 kg/13 lb per acre 597198

- 60% WestStar Alfalfa Blend
- 30% Success Hybrid Brome
- 10% Richmond Timothy

- Highest yielding for regular rotations
- Extremely adaptable with multiple disease resistance

HayPro T5 5.5 kg/12 lb per acre 1104553

- 80% Instinct Alfalfa
- 15% Amba Orchardgrass
- 5% Richmond Timothy

- Rapid establishment with great persistence
- Early maturity and strong spring growth
- Very adaptable

DUAL PURPOSE BLENDS



HayGraze 6 kg/13 lb per acre 1126968

- 60% AC Grazeland Br Alfalfa
- 30% Succession Brand Hybrid Brome
- 10% Haymate XL Orchardgrass

- Rapid regrowth and great quality.
- Use as multi-cut hay and still have extra to graze in the fall

HayGraze Dry 5 kg/13 lb per acre 1126969

- 50% AC Grazeland Br Alfalfa
- 40% MBA Meadow Brome
- 10% Kirk Crested Wheatgrass

- Obtain superior yield and quality in drier conditions without sacrificing bloat safety

SPECIALTY BLENDS



PROSTOCK Dual Horse Blend 7 kg/15 lbs per acre 1138777

- 40% Fleet Meadow Brome
- 20% WH Orchardgrass
- 15% Preval Meadow Fescue
- 15% Boreal Creeping Red Fescue
- 10% Titan Timothy

- Highly palatable blend of forage grasses for horses
- Yields well as a baled forage crop
- Also suitable for smaller ruminants (sheep)
- Does well in higher moisture areas (8+" of precipitation)



Horsemans 7 kg/15 lb per acre 837722

- 35% MBA Meadow Brome
- 20% Forage Type Kentucky Bluegrass
- 20% Haymate XL Orchardgrass
- 15% Top Tim XL Timothy
- 10% Endo-Graze XL Perennial Ryegrass

- Well balanced
- Stands up well to heavy grazing
- Excellent spring, summer and fall growth
- Adaptable and suitable for all acreage ruminants

DairyPro 5 kg/12 lb per acre 482935

- 90% Instinct Alfalfa
- 10% Richmond Timothy

- Optimized for dairy nutrition
- High-quality blend
- Premium hay production

CUSTOM CONDITIONS BLENDS



PROSTOCK Saline Area Blend 6 kg/14 lb per acre 1133472

- 30% SFT Tall Fescue
- 25% Dahurian Wild Rye
- 25% Carlton Smooth Brome
- 10% Tall Wheatgrass
- 10% Slender Wheatgrass

- Blend of five moderately tolerant plant varieties adapted to thrive in saline conditions
- Formulated for varied EC levels in your fields
- Does well in lower moisture areas
- Helps lower salinity in the soil, post planting

PROSTOCK Low Area Blend 5.5 kg/12 lb per acre 1133471

- 35% SFT Tall Fescue
- 35% Carlton Smooth Brome
- 20% Titan Timothy
- 10% Reed Canary Grass

- Combination of grasses that are flood or moist-area tolerant
- Persistent blend to advance grass growth in wet areas and reduce moisture levels
- Ability to grow in standing water



SaltPro 6 kg/14 lb per acre 855239

- 20% Big Ton XL Bromegrass
- 20% Tall Wheatgrass
- 15% Dahurian Wildrye
- 15% Slender Wheatgrass
- 15% Stargazer Tall Fescue
- 15% Assalt Alfalfa

- Diverse forage mix ensures a balanced, nutrient-rich blend
- Ideal for challenging soil conditions
- Suitable for hay production and grazing

Lowlands 6 kg/14 lb per acre 522303

- 30% Meadow Foxtail
- 25% Kora Tall Fescue
- 15% Top Tim XL Timothy
- 10% Boral Creeping Red Fescue
- 10% Defiant XL Reed Canarygrass
- 10% Dawn Alsike Clover

- Diverse and balanced mix for optimal nutrition and performance
- Excellent persistence
- Season-long growth

ANNUAL BLENDS



PROSTOCK Soil Builder 3.5-4.5kg/8-10 lbs/acre 1133474

- 25% Berseem Clover
- 20% Daikon Type Radish
- 20% Purple Top Turnip
- 20% Forage Rape
- 15% Crimson Clover

- Great blend to build soil armor and increase organic matter
- Seed into planned rest areas or as a double crop after silage
- Does well in higher moisture environments (8+” of precipitation)
- Daikon Radish will improve soil penetration and break up
- Purple Top Turnip, a larger tuber plant will also aid in soil penetration and aeration.

- Annual species to build soil aggregate structure
- Clover in this mix builds nitrogen levels in the soil profile

PROSTOCK Extender Forage 4.5kg/10 lbs/acre 1133473

- 25% Italian Annual Ryegrass
- 20% Proso Millet
- 15% Purple Top Turnips
- 15% Vivant Forage Brassica
- 15% Hairy Vetch
- 10% Kale

- Blend designed for swath grazing with or without annual cereal crop
- Designed to extend late-fall and early-winter grazing period to improve feed costs
- Kale, Brassica and Hairy Vetch in the blend add nitrogen



Annual Forage Pro 11.35 kg -13.5 kg/25-30 lb per acre 1126970

- 20% Hairy Vetch
- 20% Common Annual Ryegrass
- 20% Crown Millet
- 10% Tillage Radish
- 10% Forage Turnip
- 5% Brassica

FEATURES

- Full season cover crop for multi-use cropping systems
- Ideal for silage, dry hay, or grazing
- Diverse blend of grasses, grains, and root vegetables for balanced nutrition and soil health.
- Optimized for planting when soil temperatures are between 6-10°C,
- Extended grzing season, into November and December, even in colder climates



ALFALFA VARIETIES

Alfalfa is a deep-rooted, long lived perennial legume with versatile adaptation. It is the highest yielding of all forage, and high in quality. Widely adapted to most soils but will not tolerate areas prone to flooding, or poor draining soil.

Primarily grown for hay, providing 1-3 cuts depending on the variety and management, it can also be used in pasture grazing as well.

- Growing Period:** Spring to fall
- Soil Preferences:** Performs best in fertile loamy soils
- Drought Tolerance:** Moderate
- Salinity Tolerance:** Moderate
- Alkaline Tolerance:** Moderate
- Considerations:** Depending on variety, bloating can be a risk, requires adequate drainage.



PROSTOCK Meadowview Alfalfa

- 5.5 kg/12 lbs per acre** 1133505
- Acid tolerant alfalfa for soil pH of 4.5 to 6
 - Deeply set crown structure with a strong disease package
 - Excellent winter hardiness rating with strong regrowth after cutting
 - Intended for the Foothills and the Peace regions of Alberta

PROSTOCK Multifolate Mix Alfalfa

- 5.5 kg/12 lbs per acre** 1133470
- High Multifolate Expression with great regrowth
 - Superior disease resistance package
 - Winter hardy with a fall dormancy rating of 3
 - Makes a great addition to a grass blend or a straight alfalfa stand

PROSTOCK Choice Blend Alfalfa

- 4.5kg/10 lbs per acre** 1131889
- A blend of trifoliolate, multifoliolate and creeping root characteristics
 - Blended variety for performance and value
 - Strong traits for winter hardiness and fall dormancy blend from 2 to 4
 - Well suited for the drier areas of the province or even 1-cut systems



Alfalfa CR XL 1146447

- Improved forage yield & quality
- Excellent disease resistance and drought tolerance
- Adaptable to many soils and climates
- Helps improve soil health and fertility through nitrogen fixation.

Eclipse 1149685

- Enhanced multi-race protection from Aphanomyces & Anthracnose
- Excellent disease resistance
- Excellent forage yield & Improved forage quality
- Very high multifoliolate leaf expression

AC Grazeland 840077

- Slower digestion rate to reduce bloatng
- Very good forage quality
- Good disease resistance
- Good regrowth & forage yield

Cascade 1149688

- Creeping rooted Alfalfa
- Ideal for erosion prone and areas with challenging conditions.
- Good disease resistance including against Aphanomyces Root Rot
- Very good winter-hardiness
- Good forage quality and yield

Catalyst 1149686

- Creeping rooted Alfalfa
- Ideal for erosion prone and areas with challenging conditions.
- Good disease resistance including against Aphanomyces Root Rot
- Very good winter-hardiness
- Good forage quality and yield

FORAGE PLANT MATURITY INDEX

		MATURITY RANGE OF AVAILABLE SPECIES									
		1	2	3	4	5	6	7	8	9	
LEGUMES	ALFALFA (FD3-5)			Beginning Bloom							
	RED CLOVER			Beginning Bloom							
	WHITE CLOVER		Beginning Bloom								
	BIRDSFOOT TREFOIL			Early •••• Medium							
GRASSES	TIMOTHY				Early •••••••• Medium •••••••• Late						
	BROMEGRASS			Early •••• Medium •••• Late							
	ORCHARDGRASS		Early •••••••• Medium •••••••• Late •••••• Very Late								
	TALL FESCUE		Early •••• Medium •••• Late								
	MEADOW FESCUE		Early •••• Medium •••• Late								
	FESTULOLIUM (FESCUE TYPE)		Early •••••••• Medium •••••••• Late								
	FESTULOLIUM (RYEGRASS TYPE)		Early ••••~•••• Medium ••••~•••• Late								
	ANNUAL ITALIAN RYEGRASS	Early ••••~•••• Medium ••••~•••• Late									
	PERENNIAL RYEGRASS				Early ••••~•••• Medium ••••~•••• Late						
	REED CANARYGRASS		Early •••• Medium •••• Late								

Based on information from DLF 2026 Product Guide using a standardized, nine-point system that estimates daily changes in maturity to determine the optimal harvest timing for forage crops, balancing yield and quality.



SEEDS & SCIENCE

DLF FIBER ENERGY



HIGHER DIGESTIBILITY = HIGHER FEED INTAKE

- Livestock perform better with maximum forage yield, digestibility and protein content
- Our top products improve dry matter intake and boost milk or meat yields
- It is the surest way to maximize output without increasing input costs

CA.DLF.COM





Optimize your forage choices

The Forage Grasses, Legumes, and Annuals Adaptation Charts are a practical tool that helps you match the right forage to your land and goals. Whether you’re grazing cattle, cutting hay, or improving soil health, this chart shows which grasses will thrive based on:

- Root and plant type
- Preferred growing conditions
- Production period
- Species considerations

GROUP	INTENDED USE	SPECIES	PRODUCT NUMBER	VARIETY	ROOTING HABIT	PLANT TYPE	PREFERRED GROWING CONDITIONS	VARIETY KEY FEATURES	SPECIES CONSIDERATIONS	PRODUCTION PERIOD	APPROX. SEEDS/LB
Timothy	Dual	Timothy	482837	Richmond	Bunch Grass	Basal	• Adapt to cool, humid climate, thrives in bottomlands and finer soils	• Early maturity, strong spring vigour	• Poor recovery in limited moisture • Does not like coarser soil	Spring to Summer	1,200,000
			1149703	Top Tim XL	Bunch Grass	Basal	• Productive in northern georaphics, well drained, fertile soil	• Early maturing blend, pasture or grazing use	• Not salinity or drought tolerant	Spring to Summer	1,200,000
			584383	Comtal	Bunch Grass	Basal	• Adapted for wetter areas, able to thrive in moderate spring flooding	• Medium to late maturity • Superior head length • Vigorous leaf growth	• Low fertility tolerance • Not tolerant to aggressive grazing	Late Spring to summer	1,200,000
Wheatgrass	Dual	Crested	854828	Fairway	Bunch Grass	Basal	• Prefers medium textured well-drained soil	• Diploid suited toward pasture • Finer stems & more tolerant to moisture	• Forage quality drops after heading	Spring to Fall	135,000
			902269	Kirk	Bunch Grass	Basal	• Prefers medium textured well-drained soil	• Tetraploid type • Suitable for hay or pasture	• Forage quality drops after heading	Early Spring	195,000
		Tall	854882		Bunch Grass	Basal	• Prefers medium textured well-drained soil	• Adapted to wet, flood prone soils excellent seedling vigour, but slow to establish and late maturing	• Coarse leaves not as palatable as other wheatgrasses • Does not tolerate low mowing or grazing	Late Spring to Mid-Summer	75,000
Brome	Hay	Smooth Brome	531963	Common	Sod Forming	Basal	• Cool season grass with rhizomes	• Best for hay, pairs well with alfalfa	• Full yields often not realized for 2 or 3 years • Can be difficult to eradicate through cultivation	Mid-Spring- to Mid-Summer	142,000
	Dual		482864	Calton	Sod Forming	Elongating	• Widely adapted	• Aggressive sodforming roots • Exhibits disease resistance	• Can be considered invasive in range areas	Mid-Spring- to Mid-Summer	142,000
			1149695	Big Ton XL	Sod Forming	Elongating	• Widely adapted	• Blend of smooth brome grasses • Improved yield and disease resistance	• Can be considered invasive in range areas	Mid-Spring- to Mid-Summer	138,000
	Pasture	Meadow Brome	854677	MBA	Creeping	Elongating	• Cool season, fertile and well-drained soil	• Diploid suited toward pasture • Finer stems & more tolerant to moisture	• Does not tolerate flooding	Mid-Spring- to Mid-Summer	93,000
			1126949	Fleet	Bunch Grass	Basal	• Widely adapted; prefers well-drained soils	• Excellent regrowth • Excellent pasture variety	• Can be considered invasive in range areas	Early Spring to Mid-Summer	90,000
	Dual	Hybrid Brome	1139765	Succession	Bunch Grass	Basal	• Versatile	• Cross of meadow and smooth bromegrass • Suited to hay and pasture	• Slower regrowth than meadow bromegrass	Early Spring to Late Summer	120,000



GRASSES ADAPTATION CHART



GROUP	INTENDED USE	SPECIES	PRODUCT NUMBER	VARIETY	ROOTING HABIT	PLANT TYPE	PREFERRED GROWING CONDITIONS	VARIETY KEY FEATURES	SPECIES CONSIDERATIONS	PRODUCTION PERIOD	APPROX. SEEDS/LB
Canary	Dual	Reed	854999	Common	Sod	Elongating	• Grows well in poorly drained soil prone to flooding	• Can be subjected to temporary flooding up to eight weeks	• Not saline tolerant	Spring to Fall	535,000
Orchard-grass		Orchard-grass	1129671	Echelon	Bunch Grass	Basal	• Medium textured, well drained soil with good moisture	• Extremely late maturing • Adapted for hay, silage or grazing	• Requires good soil drainage • Cannot withstand long dry periods	Late Spring to Fall	416,000
			1149702	Haymate XL	Bunch Grass	Basal	• Medium textured, well drained soil with good moisture	• Medium-late maturing great companion for alfalfa	• Less winter hardy than other grasses	Spring to Fall	416,000
			114701	Captur	Bunch Grass	Basal	• Medium textured, well drained soil with good moisture	• Very good disease resistance late maturity	• Requires good soil drainage • Cannot withstand long dry periods	Late Spring to Fall	416,000
Fescue	Pasture	Creeping Red	486744	Boreal	Sod	Basal	• Widely adapted • Likes high precipitation	• Adapt to variety of soils tollerates close grazing and drought	• Lower production in dry regions	Spring to Fall	375,000
			482971	Common	Sod	Basal	• Widely adapted • Likes high precipitation	• Performs well in low nutritional value soil, fields with heavy wear	• Lower production in dry regions	Spring to Fall	375,000
	Dual	Meadow	1149700	Senu	Bunch Grass	Basal	• Prefers soils with good moisture, good drainage	• Active growth under low temperatures • High stress tolerance	• Required one full growing season to be established • Not tolerant to heavy grazing	Spring to Fall	227,000
		Tall	1149698	Stargazer XL	Bunch Grass	Basal	• Better drought tolerance than other cool season grasses	• Good yielder with excellent persistence • Suitable for both pastures or hay	• Can be susceptible to snow mold, winter crown and root rots	Spring to Fall	250,000
			1149699	Tower	Bunch Grass	Basal	• Widely adapted • Likes high precipitation	• Late maturity • Endophyte free	• Can be susceptible to snow mold, winter crown and root rots	Late Spring to Fall	227,000
Ryegrass	Dual	Italian	1126974	Firkin	Bunch Grass	Basal	• Medium to high-fertility soils with adequate moisture	• Tetraploid with high quality & digestibility • High vernalization requirement for no heading in seeding year	• Very susceptible to winter kill	Late Spring to Fall	227,000
			1149706	Tetrabana XL	Bunch Grass	Basal	• Medium to high-fertility soils with adequate moisture	• Tetraploid • Rapid establishment – ideal for silage, intensive grazing or frost seeding	• Very susceptible to winter kill	Late Spring to Fall	227,000
		Perennial	1149705	Endo-graze XL	Bunch Grass	Basal	• Medium to high-fertility soils with adequate moisture	• High quality forage in Spring & Fall • Extremely palatable	• Very susceptible to winter kill	Mid to Late Summer to Fall	227,000



LEGUMES ADAPTATION CHART



DLF

GROUP	INTENDED USE	SPECIES	PRODUCT NUMBER	VARIETY	ROOTING HABIT	PLANT TYPE	PREFERRED GROWING CONDITIONS	VARIETY KEY FEATURES	SPECIES CONSIDERATIONS	PRODUCTION PERIOD	APPROX. SEEDS/LB
Clover	Dual	Alsike Clover	486691	Common	Non-Creeping Branch	Low	• Cool, low-lying moist soils	• Tolerant to poorly drained soils • Survives in poor pH soils	• Bloat risk - horses	Spring	700,000
			700726	Dawn	Non-Creeping Branch	Low	• Cool, low-lying moist soils	• Grows in challenging soil conditions • Vigorous, large leaf variety	• Bloat risk	Spring	700,000
		Red Clover (Double Cut)	1104561	Common	Tap-Root	Erect	• High moisture areas, various soils	• Rapid spring growth • Works well in rotational grazing • Grazing tolerance	• Bloat risk • Short-lived - 2-3 yrs	Spring to Fall	275,000
		Red Clover (Single Cut)	482542	Common	Tap-Root	Erect	• High moisture areas, various soils	• Rapid spring growth • Works well in rotational grazing	• Bloat risk • Short-lived - 2-3 yrs	Spring to Fall	272,000
			1126952	Altaswede	Deep Tap-Root	Erect	• High moisture areas, various soils	• Single Cut variety • Rapid establishment	• Bloat risk • Short-lived - 2-3 yrs	Spring to Fall	275,000
		Yellow Sweet Clover	482819	Common	Tap-Root	Upright	• Versatile, productive in loamy soils	• Pollinator attractor • Can be used as soil builder	• Bi-annual	Spring to Fall	250,000
	Pasture	White Clover	473721	Common	Shallow	Low	• Moist, well-drained loamy soils	• Tolerant to close grazing • Nitrogen fixing	• Poor performance in hot, dry conditions	Spring to Fall	775,000
Bloat-Free Legumes	Pasture	Birdsfoot Trefoil	1130523	Bull	Tap-Root	Low	• Moist, tolerant to unfertile soils	• Good stress and grazing tolerance • Good forage yield	• Lower persistance	Spring to Fall	375,000
		Cicer Milkvetch	1149694	Coated	Creeping	Upright	• Versatile, productive in coarse soils	• Low leaf lost in hay • Resistant to gophers	• Difficult to establish	Late spring to Fall	120,000
		Sainfoin	1149693	AC Glenview	Tap-Root	Upright	• Versatile - adapted to well-drained soil	• Branch tap root	• Limited regrowth	Spring to Summer	25,000



ANNUALS ADAPTATION CHART



GROUP	INTENDED USE	SPECIES	PRODUCT NUMBER	VARIETY	ROOTING HABIT	PLANT TYPE	PREFERRED GROWING CONDITIONS	VARIETY KEY FEATURES	SPECIES CONSIDERATIONS	PRODUCTION PERIOD	APPROX. SEEDS/LB
Ryegrass	Hay, Grazing, Inter-cropping	Annual Ryegrass	1149704	Hi-Pro	Bunch Grass	Basal	• Soil of medium to high fertility with adequate moisture	• Suitable for annual hay production in high-moisture areas	• Prone to drought stress	Mid to Late Summer to Fall	220,000
Cover Crop		Hairy Vetch	1126962	Common	Shallow Tap	Upright	• Sandy and well drained soil	• Nitrogen fixer • High protein content	• Natural resistance to glyphosate	Summer to Fall	20,000
		Red Clover	1126953	Crimson	Branched Tap-Root	Semi-Erect	• Well drained soil, cooler temperature	• Spring & Fall establishment • Remains active in cool seasons	• Not tolerant to extreme heat or cold • Slight bloat risk	spring to Fall	140,000
		Berseem Clover	1149692	Common	Shallow Tap Root	Upright	• Slightly alkaline soil, loam and silty soil	• Does not cause bloat • High biomass production	• Does not winter well • Low tolerance to disease	Summer to Fall	140,000
		Kale/Turnip	1149710	Winfred	Tap	Brassica	• Sown in medium to high rainfall areas through to low rainfall	• Kale and turnip hybrid • Highly digestable		Summer to Fall	180,000
Annual	Silage, Grazing & Greenfeed	Radish	1126964	Tilliage	Tap	Brassica	• Prefers well-drained soils, cool growing conditions	• In-season and late season grazing • Soil improvement • Oilseed type		Late Summer to Fall	150,000
		Turnip	1126963	Forage	Tap	Brassica	• Prefers well-drained soils, cool growing conditions	• In-season and late season grazing • Soil improvement		Late Summer to Fall	150,000
		Sudangrass	1126960	Sorghum Sudangrass	Fibrous	Warm-Season Grass	• Prefers warm soil and growing conditions	• Triazine tolerant • High yields	• Nitrate risk • Prussic acid testing required	Late Summer to Fall	25,000
		Millet	1126961	Crown	Fibrous	Warm-Season Grass	• Prefers warm soil and growing conditions	• Great for swath grazing	• Nitrate risk	Late Summer to Fall	200,000

	<div>Restore™ NXT Rinskor™ active HERBICIDE</div>	<div>Restore™ II HERBICIDE</div>	<div>Reclaim™ II HERBICIDE</div>	<div>Grazon™ XC HERBICIDE</div>
DESCRIPTION	<ul style="list-style-type: none">• A systemic, post emergent herbicide, containing two group 4 actives, designed for the management of invasive broadleaf weeds in rangeland and permanent pastures.• Contains new Rinskor™ active, a new class of auxin herbicides with broad spectrum activity on a host of broadleaf weeds.	<ul style="list-style-type: none">• A systemic, post emergent herbicide, containing a group 4 active ingredient that works like a natural growth-regulating hormone, designed for the management of invasive broadleaf weeds in rangeland and permanent pastures.	<ul style="list-style-type: none">• Selective herbicide designed for the control of brush and a broad spectrum of broadleaf weeds in rangeland and permanent pastures.• Can be tank mixed with Grazon™ XC for added tree control.	<ul style="list-style-type: none">• Effective against a broad spectrum of undesirable trees and weeds in permanent pasture and rangeland.• Can be tank mixed with Reclaim™ II for added brush and broadleaf weed control.
GUIDELINES FOR USE	<ul style="list-style-type: none">• 33 acres/case. (1500ml/ha) 20 gal/acre ground or 5 gal/acre aerial spray solution.• Gateway™ adjuvant at 0.25% to 0.5% v/v is required.	<ul style="list-style-type: none">• 20 acres/case. (2400ml/ha) 20 gal/acre ground or 5 gal/acre aerial spray solution.• No surfactant is required.	<ul style="list-style-type: none">• 20 acres/case (230g/ha Reclaim™ II A and 1700 ml/ha Reclaim™ II B).• 20 gal/acre ground and 5 gal/acre aerial spray solution.• Gateway™ adjuvant at 0.2% v/v is required.	<ul style="list-style-type: none">• 1.9L/acre for broadleaf weed control and 2.5L/acre for trees.• 20 gal/acre ground and 5 gal/acre aerial spray solution.• Gateway™ adjuvant at 0.25 - 0.375% v/v is required.• Apply at full leaf until August on trees <12 feet in height.
RESULTS	All Corteva Range & Pasture herbicides are absorbed by the roots and leaves and translocated throughout the plant. Susceptible weeds could show results as early as a few hours post application, however, plant growth will cease within 24 and no longer than 48 hours on all species.			Reclaim™ II and Grazon™ XC herbicides are absorbed by the roots and leaves and translocated throughout the plant. Susceptible weeds, trees and/or brush could show results as early as a few hours post application, however, plant growth will cease within 24 and no longer than 48 hours on all species. Insect and/or disease pressure can affect the efficacy of Grazon™ XC on tree control.
GENERAL	<ul style="list-style-type: none">• Restore™ NXT and Restore™ II herbicides should be applied to actively growing weeds after emergence but prior to flowering. (Canada thistle timing can be extended, see label).• Environmental stresses such as severe drought or extended periods of heat may decrease efficacy. Do not spray if injury to existing legumes cannot be tolerated. Do not apply within the dripline of desirable trees.• Take appropriate measures to prevent application drift onto non-target trees or plants. Please refer to the product label for a complete listing of all weeds, application timing and a full description of the product or contact your Corteva R&P Specialist. Rainfast 4 hours.			<ul style="list-style-type: none">• All Corteva Range & Pasture herbicides should be applied to actively growing weeds after emergence but prior to flowering. (Canada thistle timing can be extended, see labels).• Environmental stresses such as severe drought or extended periods of heat may decrease efficacy. Do not spray if injury to existing legumes cannot be tolerated. Do not apply within the dripline of desirable trees, or within 1.5 the height of trees for Grazon™ XC.• Take appropriate measures to prevent application drift onto non-target trees or plants. Please refer to the product label for a complete listing of all weeds and a full description of the product or contact your Corteva R&P Specialist. Rainfast 4 hours.
WEED SPECTRUM	Bull thistle, Canada fleabane, clevers, clover, common waterhemp, curly dock, fireweed, mullein, poison hemlock, horsenettle, lamb's quarters, orange hawkweed, prickly lettuce, purple loosestrife, ragweed, scotch thistle, spotted knapweed, tall ironweed, tansy ragwort, wild caraway, wild chervil, wild parsnip, Canada thistle, absinthe wormwood, sow thistle, ox-eye daisy, scentless chamomile, tall buttercup, and many more.	Absinthe wormwood, bull thistle, buttercup, Canada thistle, common chickweed, dandelion, fleabane, goat's beard, hawkweed, horsenettle, kochia, lamb's quarters, leafy spurge, narrow leaved hawk's beard, pineapple weed, red root pigweed, ox-eye daisy, ragweed, scentless chamomile, shepherd's purse, sow thistle, spotted knapweed, stinkweed, sweet clover, tartary buckwheat, volunteer canola, wild radish, wild sunflower and many more	Baby's breath, cow cockle, corn spurry, dandelion, hemp nettle, hoary alyssum, pasture sage, prairie sage, prairie wild rose, pussytoes, shrubby cinquefoil, silverberry (wolf willow), stork's bill, tumbleweed, vetch, volunteer alfalfa, western snowberry (buckbrush), wild buckwheat, wild carrot, wild mustard, wild strawberry and many more	Aspen, Birch, common yarrow, dandelion, leafy spurge, prairie wild rose, red clover, sweet clover, vetch, wild carrot, willow, yellow toadflax, prickly lettuce, plantain, common ragweed, curly dock, Canada thistle, Canada goldenrod, Canada fleabane, burdock, balsam poplar (suppression)



syngenta®
Biologicals

Now in a convenient dry formulation.

[Learn more](#)



SEEDS & SCIENCE

DLF FIBER ENERGY



HIGHER DIGESTIBILITY = HIGHER FEED INTAKE

- Livestock perform better with maximum forage yield, digestibility and protein content
- Our top products improve dry matter intake and boost milk or meat yields
- It is the surest way to maximize output without increasing input costs

CA.DLF.COM





WE'RE GOING TO BE YOUR

#1 SEED

JUST WATCH US

We're developing the high yielding hybrids and varieties you need across canola, corn, and soybeans. Our DEKALB® seed lineup is stronger and more advanced than ever. We're not holding back. We're working to be your #1 seed.

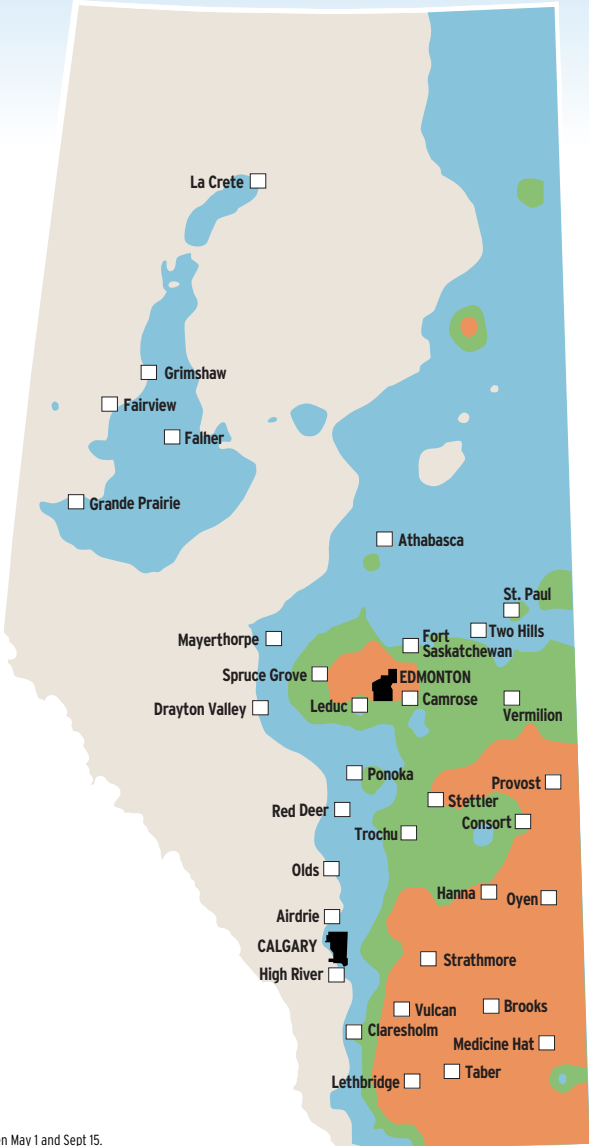


DEKALB.ca | 1 888-283-6847 | @Bayer4CropsCA

ALWAYS READ AND FOLLOW PESTICIDE LABEL DIRECTIONS. Bayer, Bayer Cross, DEKALB and Design® and DEKALB® are registered trademarks of Bayer group. Used under license. Bayer CropScience Inc. is a member of CropLife Canada. ©2025 Bayer Group. All rights reserved.

CORN HEAT UNITS



- Early 1800-2000
- Mid 2000-2100
- Late > 2100
- UFA Farm & Ranch Supply stores



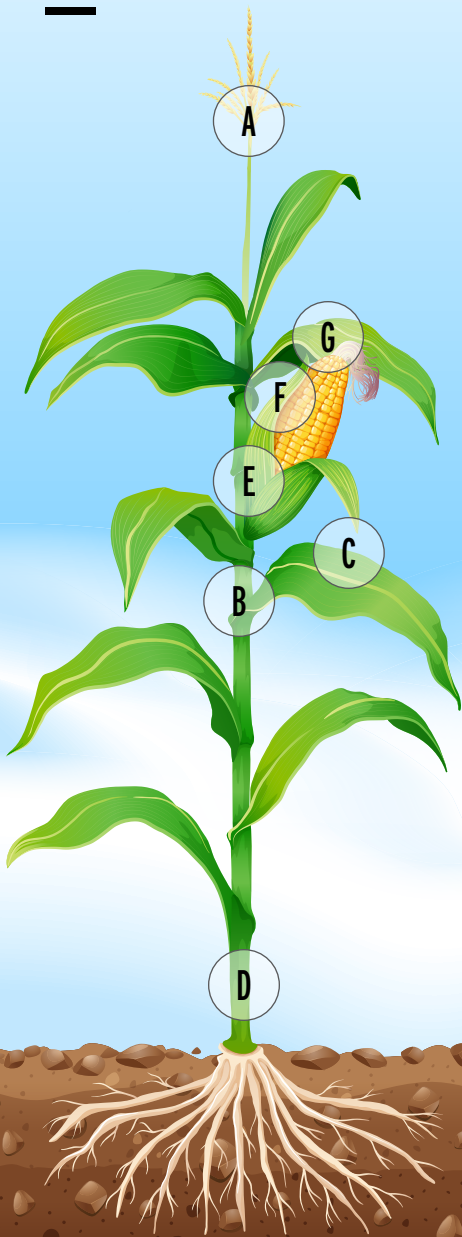
Heat unit values are based on growing degree day accumulations using a 10C base between May 1 and Sept 15.



Scan the code to find out more about corn at UFA.com

		HYBRID	TRAIT	RIB	RM	PURPOSE	CHU GRAIN CORN	CHU SILAGE CORN	FLOWERING TIMING FOR MATURITY	EAR TYPE	TARGET POPULATION	GRAIN YIELD	TEST WEIGHT	PLANT HEIGHT	STAYGREEN	VIGOUR	DROUGHT TOLERANCE	SILAGE YIELD	MILK PER TONNE	MILK PER ACRE	NEUTRAL DETERGENT FIBRE (dNDF)	STARCH CONTENT
 DLF		DLF 1999VT2P RIB	VT2P	Y	69	Dual	1800	1584-1728	Early	Fixed	32-36	VG	G	Short-Medium	G	VG	G	G	G	G	G	G
		DLF 2076VT2P RIB	VT2P	Y	72	Dual	1950	1716-1872	Average	Semi-Flex	32-36	VG	G	Medium	G	VG	G	G	G	G	G	G
		DLF 2142RR	RR	N	75	Dual	2000	1760-1920	Early	Fixed	32-36	VG	VG	Medium	G	VG	VG	G	VG	G	G	G
		DLF 2158VT2P RIB	VT2P	Y	76	Dual	2075	1832-1997	Early	Semi-Determinate	32-36	VG	EXC	Medium-Tall	VG	VG	VG	VG	-	-	-	-
		DLF 2320RR	RR	N	78	Dual	2200	1936-2112	Early	Semi-Fixed	30-34	G	EXC	Medium	VG	VG	VG	EXC	VG	G	EXC	VG
		DLF 2334VT2P RIB	VT2P	Y	80	Dual	2300	2046-2232	Early	Semi-Determinate	30-34	VG	EXC	Tall	VG	VG	VG	EXC	-	-	-	-
		DLF 2495RR	RR	N	80	Dual	2325	2046-2232	Early	Semi-Fixed	30-34	VG	EXC	Very Tall	VG	VG	VG	EXC	VG	VG	EXC	EXC
		DLF EXSEED LF RR	RR	N	85	Silage	2450	2156-2352	Early	Flex	28-30	P	P	Tall	G	VG	G	EXC	EXC	VG	EXC	EXC
		DLF EXPAND LF RR	RR	N	90	Silage	2625	2310-2520	Average	Flex	26-28	P	P	Very Tall	G	VG	G	EXC	VG	EXC	G	VG
	NEW	DKC069-10RIB	VT2P	Y	69	Grain	2025	-	Late	Fixed	32-34	EXC	EXC	Medium	EXC	EXC	VG	-	-	-	-	-
		DKC20-23RIB	VT2P	Y	70	Grain	2050	-	Average	Fixed	32-34	VG	EXC	Medium	VG	EXC	VG	-	-	-	-	-
		DKC21-36RIB	VT2P	Y	71	Silage Ready	2075	1800-2000	Late	Fixed	32-34	EXC	EXC	Medium	EXC	EXC	VG	EXC	VG	EXC	EXC	EXC
		DKC072-12RIB	VT2P	Y	72	Silage Ready	2075	1850-2100	Early	Fixed	32-34	EXC	EXC	Medium	EXC	EXC	EXC	EXC	VG	EXC	VG	VG
		DKC24-06RIB	VT2P	Y	74	Silage Ready	2100	1825-2050	Late	Fixed	34-36	G	EXC	Medium-Tall	VG	VG	VG	G	VG	VG	EXC	VG
	NEW	DKC074-82RIB	VT2P	Y	74	Grain	2125	-	Average	Semi-Flex	32-36	EXC	VG	Medium-Tall	VG	EXC	EXC	-	-	-	-	-
		DKC26-40RIB	VT2P	Y	76	Silage Ready	2150	1925-2100	Late	Semi-Fixed	36-38	G	EXC	Medium-Tall	EXC	EXC	EXC	G	VG	VG	EXC	VG
		DKC28-25RIB	VT2P	Y	78	Grain	2250	-	Average	Semi-Fixed	32-36	EXC	VG	Medium	VG	EXC	EXC	-	-	-	-	-
		DKC31-85RIB	VT2P	Y	81	Silage Ready	2425	2125-2300	Average	Semi-Fixed	32-36	EXC	VG	Medium-Tall	EXC	VG	VG	EXC	EXC	EXC	EXC	VG
	NEW	DKC081-18RIB	VT2P	Y	81	Silage Ready	2450	2150-2325	Late	Semi-Fixed	32-36	EXC	G	Tall	EXC	VG	VG	EXC	EXC	EXC	EXC	VG
		DKC33-37RIB	VT2P	Y	83	Silage Ready	2500	2250-2425	Average	Semi-Flex	32-36	EXC	VG	Medium-Tall	VG	VG	EXC	EXC	VG	VG	EXC	VG
		DKC36-48RIB	VT2P	Y	86	Silage Ready	2600	2375-2525	Average	Semi-Flex	32-34	EXC	VG	Tall	VG	EXC	EXC	VG	EXC	EXC	EXC	EXC

SILAGE CONTRIBUTION BY PLANT PART



CONTRIBUTION OF PLANT PARTS TO YIELD AND QUALITY			
Part	% of DM	NDF %	Digestibility %
A. Tassel	1	78	63
B. Leaf Sheath	6	78	69
C. Leaf Blade	10	67	82
D. Stalk	19	67	74
E. Husk	5	81	75
F. Cob	12	89	39
G. Grain	47	12	90
Silage	100	45	77
Earlage	60	30	80

GET MORE OUT OF YOUR EQUIPMENT.

Dieselelex Gold has more benefits than other high-end diesels.

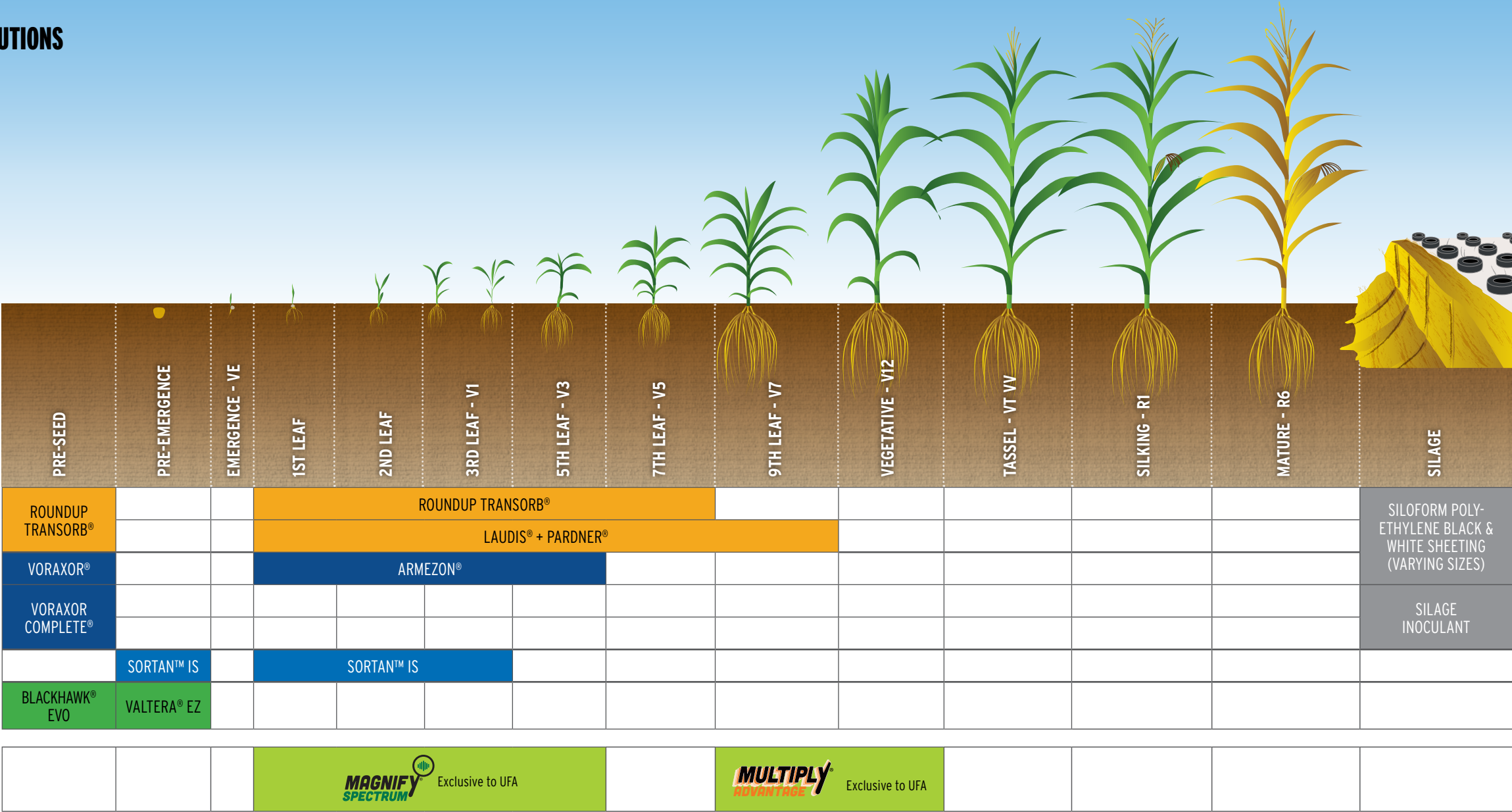
That means **more** engine hours, doing **more** hard work, **more** efficiently, with **more** protection for vital components—putting **more** money in your pocket in the long run. And it’s only available at UFA—one **more** reason to fuel your diesels with us.

Dieselelex[®] Gold
Power • Efficiency • Protection



Scan to see the difference Dieselelex Gold can make





☐ Credit ☐ Prepay ☐ Finance Offer



© 2025 UFA Co-operative Ltd. All rights reserved. 14503

**GET THE OFFER
AND GET THE BENEFIT
OF MORE TIME TO PAY.**

2026 Spring credit offers, so you can get what you need now & pay later.

Talk to your CAM for more details.

**BOOK NOW.
PAY LATER.**

**Offer valid on
purchases between
February 1 -
May 31, 2026**

Book seed, crop protection and many other products you need without paying until June 25, 2026.

ELIGIBLE PRODUCTS INCLUDE:
Bulk fuel, oil & lubricants, tanks and accessories
Seed, fertilizer, crop protection, crop input services,
in-stock bins & augers.
Livestock supplies, building materials and all other
retail products



**Offer valid on
purchases between
February 1 -
May 31, 2026**

EXCLUSIVE OFFER THOUGH UFA

Get the seed, crop protection & nutrition and fuel you need and take advantage of UFA exclusive rates with FCC and extend your payment to March 15, 2027.



PREPAY OFFER

Prepay canola & corn seed bookings prior to December 31, 2025 and receive up to \$25/bag rebate on 2026 purchases.

Terms and conditions apply. See UFA.com/CreditOffer for details.

SOME OF THE FINEST FORAGE YOU'LL FIND.

Whether establishing new or refreshing existing pasture or hay fields, start with UFA's exclusive PROSTOCK forage seed blends.

PROSTOCK's Canadian Prairies-tested alfalfa, pasture, hay and curated blends have enhanced agronomic traits focused on soil moisture, ideal planting times and temperatures, and winter hardiness.

Discover PROSTOCK at UFA.com/Forage

